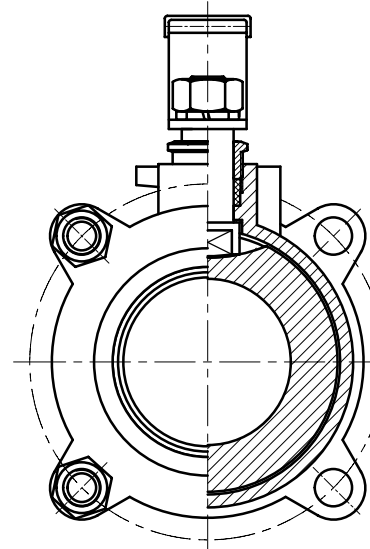
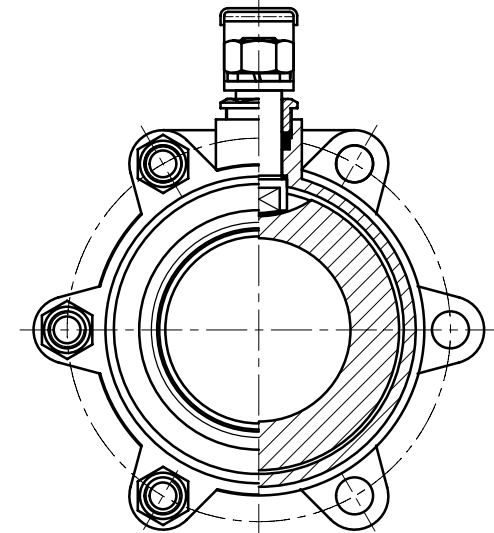


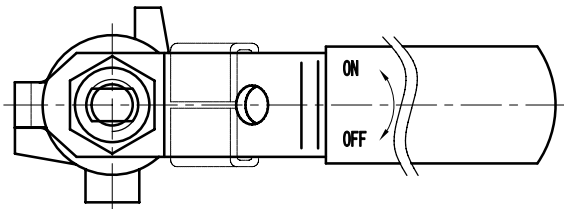
FOR 1/4~2"  
4Bolts



FOR 2 1/2~3"  
4Bolts



FOR 4"  
6Bolts



15	Lock	201
14	Nut	A2-70
13	Spring Washer	S.S
12	Bolt	A2-70
11	Nut	A2-70
10	Spring Washer	S.S
9	Handle	201
8	Gland	304/316
7	Packing	PTFE
6	Thrust Washer	PTFE
5	Stem	304/316
4	Ball	304/316
3	Cap	CF8/CF8M
2	Seat	PTFE
1	Body	CF8/CF8M
NO:	PART NAME	MATERIAL

NPS	d	L	W	H≈
1/4"	12	67	98	52
3/8"	12	67	98	52
1/2"	15	65	98	53
3/4"	20	75	110	60
1"	25	83	135	74
1 1/4"	32	98	142	88
1 1/2"	38	109	170	93
2"	49	132	170	102
2 1/2"	65	178	220	133
3"	78	205	245	134
4"	98	264	325	172

**The technical requirements**

- Design and manufacture according to manufacturer's standard;
- End thread connections: P (BSP/NPT) - according to the requirements of the order processing;
- End to end according to manufacturer's standard;
- Sealing test (gas) : 0.6 ~ 0.8 MPa.

CHECKED BY  
  
OLD DRAWING NO.  
  
BASED DRAWING NO.  
  
SIGN  
  
DATE

														Sample			BALL VALVE (3PC-B)		
MARK		QTY		FILE NO.		SIGN		DATE		PATTERN MARKER		EDITION	SCALE		Q11F-1000PSI-00				
DESIGN						DATE		170704				01	1:1						
CHECK						DATE													
AUDIT						DATE													
APPROVE						DATE				SHEET									