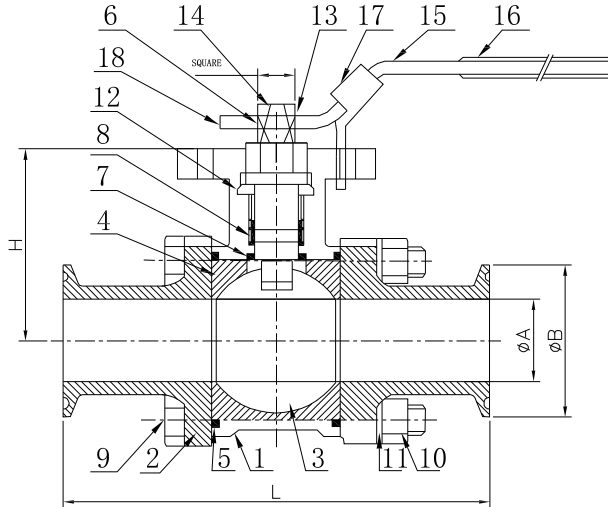
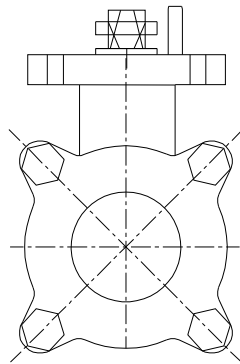
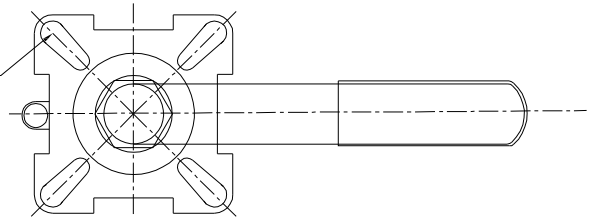


SI-V3-ALS

1.6 / (0.8)

DIN3337
ISO5211



ADOPTION STANDARD

ALL ROUNDERED CORNER: R0.2;
ALL THE DEVIATION: ±0.1;

Key features:

Available in Tri-Clamp, sizes: 1/2" to 4".
Temperature range: -20 ° C to 180° C.
Operating pressure: 1/2" to 2" 1000 PSI
and 2 1/2" to 4" 800 PSI.
Insulated grip, lockable lever handle.
Movement: 90° turn.

NO	PARTS NAME	MATERIAL
1	BODY	ASTM-A351-CF3M
2	CAP	ASTM-A351-CF3M
3	BALL	A351-CF3M
4	SEAT	PTFE
5	GASKET	PTFE
6	STEM	F316L
7	PACKING	PTFE
8	GLAND PACKING	PTFE
9	BOLT	304
10	NUT	304
11	WASHER	304
12	GLAND	304
13	STEM WASHER	304
14	STEM NUT	304
15	HANDWHEEL	304
16	HANDLE SLEEVE	PLASTIC
17	LOCKING DEVICE	304
18	STOP PIN	304

SIZE	ØA	ØB	L	H	SQUARE
1/2"	9.4	25.4	89	36	9*9
3/4"	15.8	25.4	101	42.5	9*9
1"	22.1	50.5	114	52	11*11
1 1/4"	28.5	50.5	125	60.5	11*11
1 1/2"	34.8	50.5	138	71.5	14*14
2"	47.5	64	156	78.5	14*14

3-Piece Ball Valve
ISO 5211 Direct Mount

STV VALVE TECHNOLOGY
GROUP CO., LTD