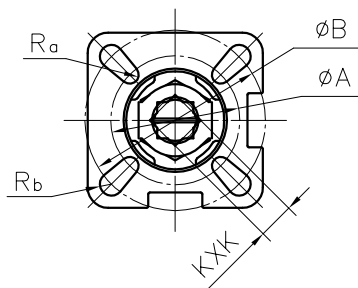


ITEM	PARTS	MATERIAL
1	BODY	WCB
2	SEAT	PTFE
3	BALL	304
4	GASKET	PTFE
5	BONNET	WCB
6	BOLT	304
7	NUT	304
8	STEM	304
9	STEM WASHER	PTFE+25% GLASS FIBER
10	O RING	FPM
11	PACKING	PTFE
12	GLAND	304
13	DISC SPRING	304
14	ANTI-STATIC DEVICE	304
15	NUT	304
16	CROWN WASHER	304

Nominal Diameter	d	D1	D2	D	L	b	n-ød1	R <sub>a</sub>	R <sub>b</sub>	A	B	KXX	
15	1/2"	15	35	60.3	90	108	10.5	4-16	3.0	3.0	36	42	9X9
20	3/4"	20	43	69.9	100	117	10.5	4-16	3.0	3.0	36	42	9X9
25	1"	25	51	79.4	110	127	10.5	4-16	3.0	3.5	42	50	11X11
32	1 1/4"	32	63.5	88.9	115	140	11.2	4-16	3.0	3.5	42	50	11X11
40	1 1/2"	40	73	98.4	125	165	12.7	4-16	3.5	4.5	50	70	14X14
50	2"	50	92	120.7	150	178	14.3	4-19	3.5	4.5	50	70	14X14
65	2 1/2"	65	105	139.7	180	190	15.9	4-19	4.5	5.5	70	102	17X17
80	3"	80	127	152.4	190	203	17.5	4-19	4.5	5.5	70	102	17X17
100	4"	100	157	190.5	230	229	22.3	8-19	4.5	5.5	70	102	17X17
125	5"	125	185	216	255	356	22.3	8-22	5.5	6.5	102	125	22X22
150	6"	150	216	241.3	280	394	23.9	8-22	5.5	6.5	102	125	27X27

SPECIFICATIONS	
Applicable temperature	-29~150 (°C)
Applicable medium (WCB)	Water, oil, gas
Applicable medium (CF8)	Nitric acid
Applicable medium (CF8M)	Acetic acid



NOTE:

- 1.Design and Manufacture for valve according to ASME B16.34.
- 2.Inspection and Test for valve according to API 598.
- 3.Face-to-face dimensions for valve according to ASME B16.10.
- 4.End flange dimensions for valve according to ASME B16.5.
- 5.Firesafe for valve according to API 607.

--	--