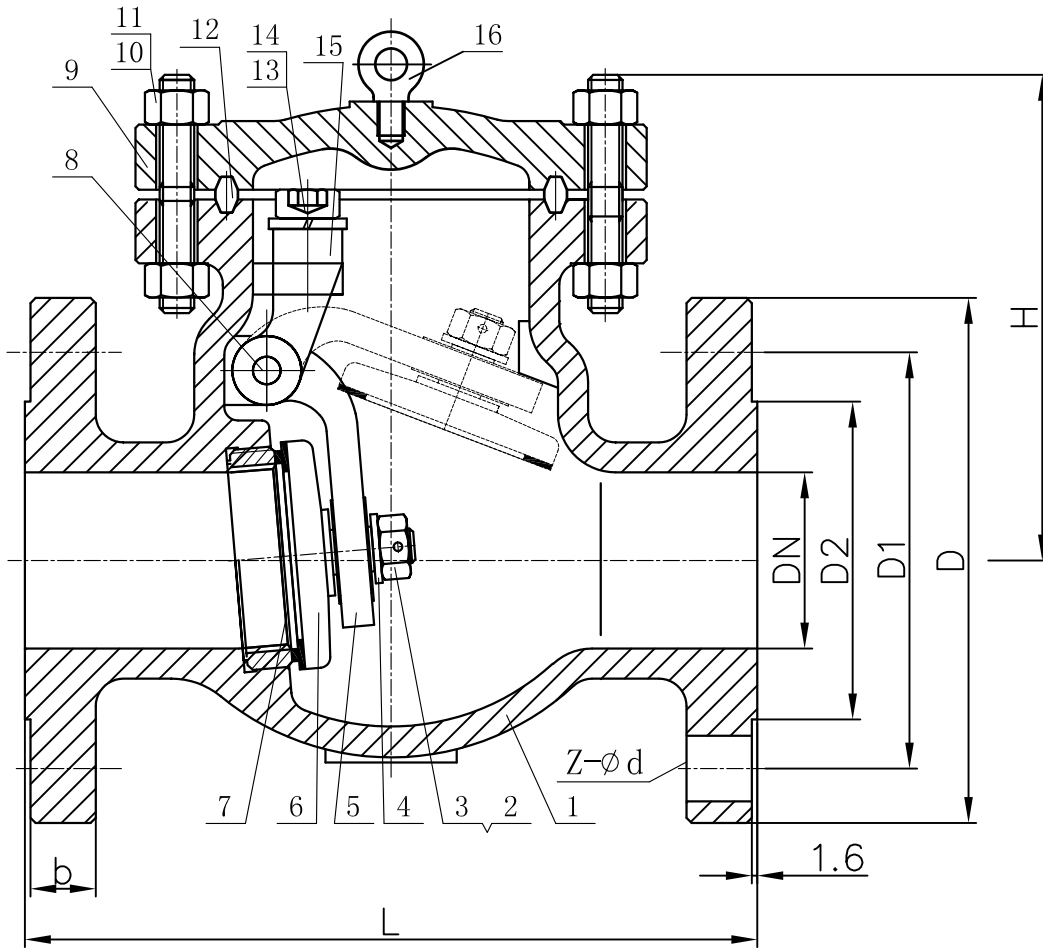


H44H-10K-00



NPS	DN	L	D	D1	D2	b	H	Z-φd
2"	50	203	155	120	100	16	165	4-19
2 1/2"	65	216	175	140	120	18	175	4-19
3"	80	241	185	150	130	18	190	8-19
4"	100	292	210	175	155	18	215	8-19
6"	150	406	280	240	215	22	265	8-23
8"	200	495	330	290	265	22	320	12-23
10"	250	622	400	355	325	24	365	12-25
12"	300	698	445	400	370	24	415	16-25
14"	350	787	490	445	415	26	460	16-25
16"	400	864	560	510	475	28	495	16-27
16"	450	978	620	565	530	30	550	20-27

NO.	Designation	QTY	Material	Remark
1	Body	1	ASTM A216 WCB	
2	Valve Nut	1	ASTM A194 2H	
3	Disc Nut Pin	1	ASTM A276 410	
4	Disc Washer	1	Carbon Steel	
5	Hinge	1	ASTM A216 WCB	
6	Disc	1	ASTM A216 WCB+13Cr	
7	Seat		ASTM A105+13Cr	
8	Hinge Pin	1	ASTM A276 410	
9	Cover	1	ASTM A216 WCB	
10	Cover Bolt		ASTM A193 B7	
11	Cover Nuts		ASTM A194 2H	
12	Gasket	1	304+Graphite	
13	Eye Bolt	1	ASTM A193 B7	
14	Spring Washer	1	Spring Steel	
15	Bearing Bracket	1	ASTM A216 WCB	
16	Stationary Rings	1	Carbon Steel	

Technical requirement  
 Design and manufacture: JIS B2074 B2084  
 Face standard JIS B2212 B2214  
 Structural standards JIS B2002  
 Pressure tes: JIS B2003

SPECIFICATIONS			
Nominal pressure		10K	
TESTING PRESSURE	Shell testing	2.4	MPa
	Seat testing	1.5	
	Backseat testing		
	Air seat testing	0.6	
Max, Temperature		-29~425	°C

				SWING CHECK VALVE				H44H-10K-00			
Design		standardization									
proofing		authorized									
auditing		Ratify									
technics		date						FANGWEN			