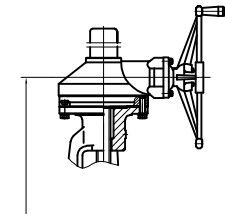
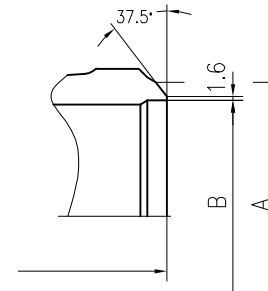


No.	Parts Name	Materials	No.	Parts Name	Materials
15	Nut	ASTM A194 2H	1	Body	ASTM A216 WCB
16	Stem nut	QAL9-4	2	Disc	A105+STL
17	HANDWHELL	KTH330-08	3	Split collar	A276 410
18	Hex nut	A193 B7	4	Disc cap	A276 410
19			5	Stem	A182 F6a
20			6	Bonnet	ASTM A105
21			7	Gasket	SS304+GRAPHITE
22			8	YOKE	ASTM A216 WCB
23			9	Packing	Soft GRAPHITE
24			10	Straight pin	ASTM 1035
25			11	Eyebolt	A193 B7
26			12	Lock nut	ASTM 1035
27			13	GLAND	A276 410
28			14	GLANDFLANGE	A216 WCB

class 1500

size	L	D0	A	B	H
2 1/2"	419	350	φ 75	φ 59	515



VALVE DESIGN DATA			
SPECIFICATION REQUIRED		API 600	
TYPE of VALVE		GLOBE VALVE	
VALVE OPERATING		H/W OP	
VALVE PRESSURE CLASS		1500LB	
END CONNECTION TYPE		BW	
END to END DIMENSION		ANSI B16.10	
BW DIMENSION		ANSI B16.25	
TEST		API 598	
PAINTING or COATING		-	
TEST PRESSURE	HYDRAULIC	SHELL : 37.5	Mpa
	PNEUMATIC	SEAT : 27.5	Mpa
Date	REV. No.	DESIGNED	
DWG. No.		REVIEWED	
CLIENT		APPROVED	
TITLE		GLOBE VALVE CLASS 1500	